

A man with curly hair is crouching in a desert-like environment with a reddish-brown, textured background. He is wearing a long-sleeved sweater with a colorful geometric pattern in shades of red, orange, blue, and beige. His jeans are light grey and worn-in. On his left wrist, he has a gold-toned beaded bracelet and a red henna-style tattoo with geometric patterns. The lighting is dramatic, casting shadows on the ground.

FALL/WINTER 2012/2013

**ADenim**



#### MOTIF 1



#### MOTIF 3

**Article:** 8209 ADAM, Fade Out Cord  
**Material:** 98% cotton, 2% spandex  
**Sizes:** inch  
**Colours:** beige, brown, dark brown, rust red  
**Delivery period:** July - September 2012



#### MOTIF 5

**Article:** 8285 ADAM, Lefthand Denim  
**Material:** 100% cotton  
**Sizes:** inch  
**Colours:** dark blue  
**Delivery period:** July - September 2012



#### MOTIF 2

**Article:** 8209 ADAM, Fade Out Cord  
**Material:** 98% cotton, 2% spandex  
**Sizes:** inch  
**Colours:** beige, brown, dark brown, rust red  
**Delivery period:** July - September 2012



#### MOTIF 4

**Article:** 8285 ADAM, Lefthand Denim  
**Material:** 100% cotton  
**Sizes:** inch  
**Colours:** dark blue  
**Delivery period:** July - September 2012



#### MOTIF 6

**Article:** 8201 ALAN, Cotton Gabardine  
**Material:** 100% cotton  
**Sizes:** inch  
**Colours:** brown, dark brown, beige, navy, military  
**Delivery period:** July - September 2012



**MOTIF 7**  
**Article:** 8201 ALAN, Cotton Gabardine  
**Material:** 100% cotton  
**Sizes:** inch  
**Colours:** brown, dark brown,  
 beige, navy, military  
**Delivery period:** July - September 2012



**MOTIF 8**  
**Article:** 8201 ANDY, Cotton Gabardine  
**Material:** 100% cotton  
**Sizes:** inch  
**Colours:** brown, dark brown,  
 beige, navy, military  
**Delivery period:** July - September 2012



**MOTIF 9**  
**Article:** 8201 AUSTIN, Cotton Gabardine  
**Material:** 100% cotton  
**Sizes:** inch  
**Colours:** brown, dark brown,  
 beige, navy, military  
**Delivery period:** July - September 2012



**MOTIF 10**  
**Article:** 8203 ANDY, Pima Cotton  
**Material:** 96% cotton, 4% spandex  
**Sizes:** inch  
**Colours:** light olive, beige,  
 grey, dark green  
**Delivery period:** July - September 2012



**MOTIF 11**  
**Article:** 8203 ANDY, Pima Cotton  
**Material:** 96% cotton, 4% spandex  
**Sizes:** inch  
**Colours:** light olive, beige,  
 grey, dark green  
**Delivery period:** July - September 2012



**MOTIF 12**  
**Article:** 8212 ANDY, Washed Tweed  
**Material:** 60% wool, 39% polyester,  
 1% spandex  
**Sizes:** inch  
**Colours:** light grey melange  
**Delivery period:** July - September 2012



#### MOTIF 13

**Article:** 8212 ANDY, Washed Tweed  
**Material:** 60% wool, 39% polyester,  
 1% spandex  
**Sizes:** inch  
**Colours:** light grey melange  
**Delivery period:** July - September 2012



#### MOTIF 15

**Article:** 8215 ANDY, Washed Herringbone  
**Material:** 60% wool, 39% polyester,  
 1% spandex  
**Sizes:** inch  
**Colours:** light grey melange,  
 anthracite melange  
**Delivery period:** July - September 2012



#### MOTIF 14

**Article:** 8215 ANDY, Washed Herringbone  
**Material:** 60% wool, 39% polyester,  
 1% spandex  
**Sizes:** inch  
**Colours:** light grey melange,  
 anthracite melange  
**Delivery period:** July - September 2012



#### MOTIF 16

**Article:** 8217 ARIAN, Flannel  
**Material:** 64% polyester, 34% viscose,  
 2% spandex  
**Sizes:** inch  
**Colours:** anthracite melange  
**Delivery period:** July - September 2012



#### MOTIF 17

**Article:** 8230 ADAM, Grey Denim  
**Material:** 100% cotton  
**Sizes:** inch  
**Colours:** grey, light grey  
**Delivery period:** July - September 2012



#### MOTIF 18

**Article:** 8236 ALEX, Red Selvedge  
**Material:** 100% cotton  
**Sizes:** inch  
**Colours:** navy, denim, dark denim  
**Delivery period:** July - September 2012



**MOTIF 19**  
**Article:** 8236 ASH, Red Selvedge  
**Material:** 100% cotton  
**Sizes:** inch  
**Colours:** navy, denim, dark denim  
**Delivery period:** July - September 2012



**MOTIF 20**  
**Article:** 8236 ASH, Red Selvedge  
**Material:** 100% cotton  
**Sizes:** inch  
**Colours:** navy, denim, dark denim  
**Delivery period:** July - September 2012



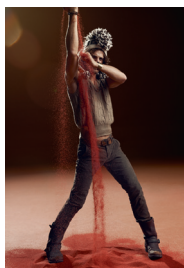
**MOTIF 21**  
**Article:** 8261 ADAM, Coloured Denim  
**Material:** 100% cotton  
**Sizes:** inch  
**Colours:** blue, denim, navy, black, grey melange  
**Delivery period:** July - September 2012



**MOTIF 22**  
**Article:** 8261 ASH, Coloured Denim  
**Material:** 100% cotton  
**Sizes:** inch  
**Colours:** blue, denim, navy, black, grey melange  
**Delivery period:** July - September 2012



**MOTIF 23**  
**Article:** 8209 ANDY, Fade Out Cord  
**Material:** 98% cotton, 2% spandex  
**Sizes:** inch  
**Colours:** beige, brown, dark brown, rust red  
**Delivery period:** July - September 2012



**MOTIF 24**  
**Article:** 8209 ANDY, Fade Out Cord  
**Material:** 98% cotton, 2% spandex  
**Sizes:** inch  
**Colours:** beige, brown, dark brown, rust red  
**Delivery period:** July - September 2012



#### MOTIF 25

**Article:** 8209 ANDY, Fade Out Cord

**Material:** 98% cotton, 2% spandex

**Sizes:** inch

**Colours:** beige, brown, dark brown, rust red

**Delivery period:** July - September 2012



#### MOTIF 27

**Article:** 8299 ALEX, Authentic Superblue

**Material:** 100% cotton

**Sizes:** inch

**Colours:** denim, blue, dark blue

**Delivery period:** July - September 2012



#### MOTIF 29

**Article:** 8299 ADAM, Authentic Superblue

**Material:** 100% cotton

**Sizes:** inch

**Colours:** denim, blue, dark blue

**Delivery period:** July - September 2012



#### MOTIF 26

**Article:** 8299 ADAM, Authentic Superblue

**Material:** 100% cotton

**Sizes:** inch

**Colours:** denim, blue, dark blue

**Delivery period:** July - September 2012



#### MOTIF 28

**Article:** 8299 ALEX, Authentic Superblue

**Material:** 100% cotton

**Sizes:** inch

**Colours:** denim, blue, dark blue

**Delivery period:** July - September 2012



#### MOTIF 30

**Article:** 8299 ADAM, Authentic Superblue

**Material:** 100% cotton

**Sizes:** inch

**Colours:** denim, blue, dark blue

**Delivery period:** July - September 2012





**MOTIF 31**  
**Article:** 8238 ALEX, Selvedge  
**Material:** 100% cotton  
**Sizes:** inch  
**Colours:** blue, royalblue  
**Delivery period:** July - September 2012



**MOTIF 32**  
**Article:** 8238 ALEX, Selvedge  
**Material:** 100% cotton  
**Sizes:** inch  
**Colours:** blue, royalblue  
**Delivery period:** July - September 2012



**MOTIF 33**



**MOTIF 34**



**MOTIF 35**



**MOTIF 36**



**MOTIF 37**

# A Denim

FÜR WEITERE INFORMATIONEN | FOR MORE INFORMATION:

**hopfer PUBLIC RELATIONS**

Mona Hopfer, Public Relations

Panoramaweg 6 | 78727 Oberndorf a. N.

Tel.: +49 (0) 74 23 / 875 87 52 | Fax: + 49 (0) 74 23 / 87171

mona.hopfer@hopfer-pr.de

**A Denim** brand of ALBERTO GMBH & CO. KG

Marco Lanowy, Managing Director

Rheydter Straße 19 - 31 | 41065 Mönchengladbach

Tel.: +49 (0) 2161/8192 53 | Fax: +49 (0) 2161/819 29 53

lanowy@a-denim.com | [www.a-denim.com](http://www.a-denim.com)